



Year 3 Science - Save our bees
(Environmental studies)

Knowledge and skills
Empower
You to
Succeed

Cronton CE Primary School

Keys to
Success

Summer 1



Knowledge



Vocabulary



Bees



Bees are known for their very important role in pollination and for producing honey and bees-wax. Without bees, a lot of plants that we eat would not be able to produce seeds to grow new plants.

Bees are in serious danger of disappearing.

This is due to:

Loss of wild flowers due to increased farming.

Unfriendly gardens with paving, decking and flowers that are not rich in nectar.

Use of pesticides which affect a bee's immunity.

Mobile phone masts which make it difficult for bees to find their way back to the hive.

Changes in the weather: Summers have been very wet and bees cannot look for food unless it is dry.

Varroa Mite: The Varroa mite is a major factor in the decline of bees, shortening their life span and causing whole colonies to collapse.

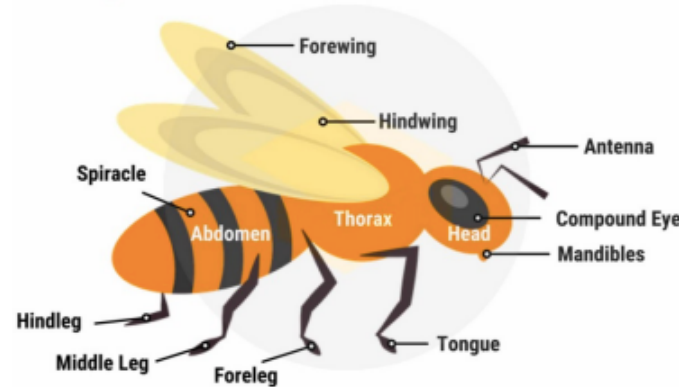


They produce pheromones which scent the flowers they have fed on (nectar and pollen) so that other bees do not waste their time on an 'empty' flower.

The Lifecycle Of The Honey Bee



Parts of a bee



A bee is classified as an insect because it has :

- An **exoskeleton** or a hard, shell-like covering on the outside of its body.
- Three main body parts: **head, thorax, and abdomen**.
- A pair of **antennae** on top of their heads.
- **Three pairs of legs**.

Bees beat their wings very quickly - around 200 times per second. That's what makes them buzz.

Species - group of similar living things. There are around 20,000 species of bee, 250 of which are in the U.K

Colony - A group of living things of one kind living together.

Nectar - sugary juice that bees suck out of flowers with tongues to give them lots of energy.

Pollen - dust like powder that comes from stamen of flowers.

Pollination - transfer of pollen from the stamen of one flower to stigma of another to produce a seed.

Pheromone - scent that is produced by an animal and serves as a signal to other individuals of the same species.

Varroa mite - microscopic parasite that is killing off honey bees.

Swarm - large number of bees emigrating together from a hive, with a queen, to start a new colony somewhere else.