



Knowledge



Vocabulary

Different types of plants and trees

rose



daffodil



buttercup



dandelion



daisy



tulip



oak



hawthorn



horse chestnut



sycamore



ash



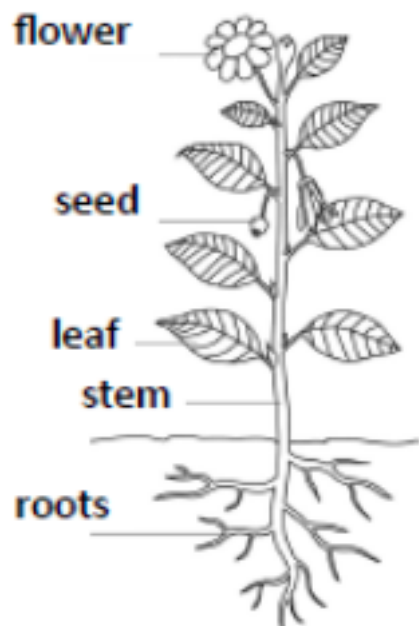
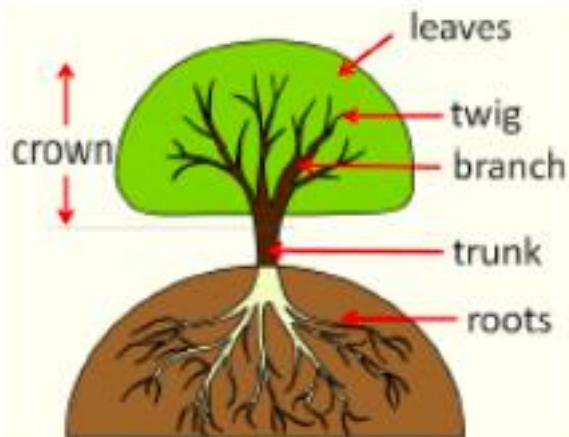
holly



cherry



hazel



Leaf - these are flat, thin and usually green.

Flower - part of a plant that is often brightly coloured.

Fruit - fleshy part of a plant that has seeds or a stone.

Root - part of a plant that grows under the ground.

Seed - small part of a flowering plant that grows into a new plant.

Evergreen tree - have green leaves all year round.

Deciduous trees - lose their leaves in autumn every year.