

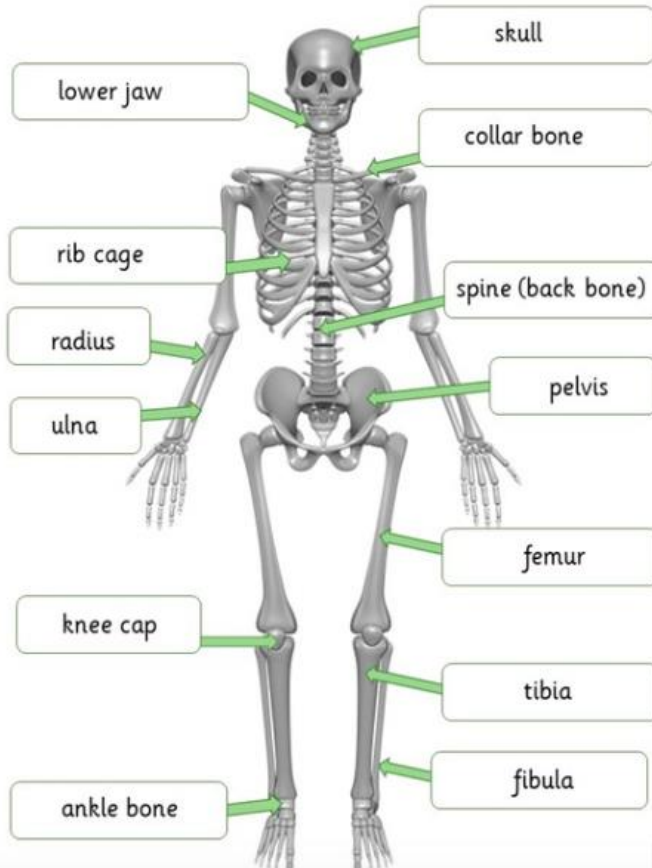


Knowledge



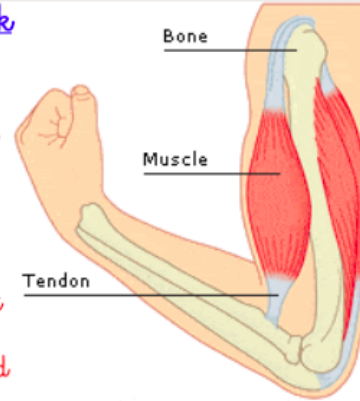
Vocabulary

Skeleton



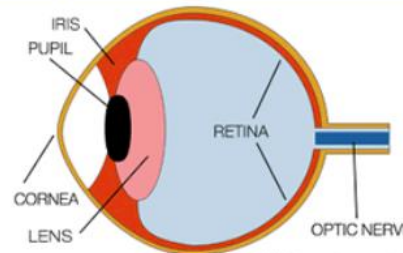
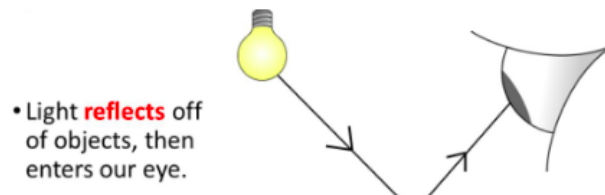
How Muscles Work

Muscles can only pull and cannot push. Therefore muscles have to work in pairs (contracting and relaxing) to move a joint. One muscle will contract and pull a joint one way and another muscle will contract and pull it the other.



How do we see?

We see objects when light, which travels in straight lines, enters our eyes. The light may be direct, if the object is a light source, or reflected off an object.



Iris - coloured part of the eye which controls dilation and constriction of the pupil.

Pupil - circular opening in the centre of the iris through which light passes.

Cornea - transparent circular part of the front of the eyeball.

Lens - transparent structure situated behind your pupil that focuses light on the retina.

Retina - light sensitive layer that lines the interior of the eye.

Optic nerve - transfers all the visual information to the brain.

Vertebrate - animals that have a back bone inside their body.

Invertebrate - animals that don't have a back bone.

Bone marrow - bones are hollow and contain a spongy substance called bone marrow.