



Year 5 Science - Plants and photosynthesis (biology)

Knowledge and skills
Empower
You to
Succeed

Cronton CE Primary School

Keys to
Success

Summer 1



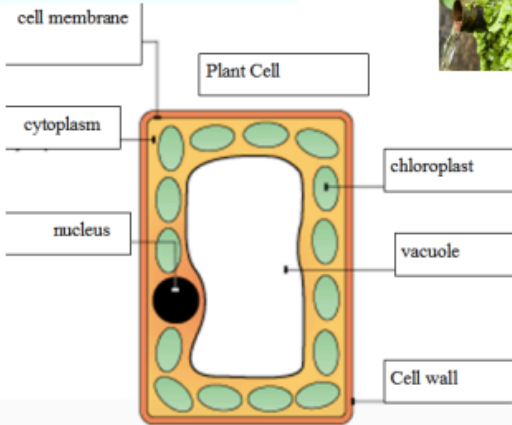
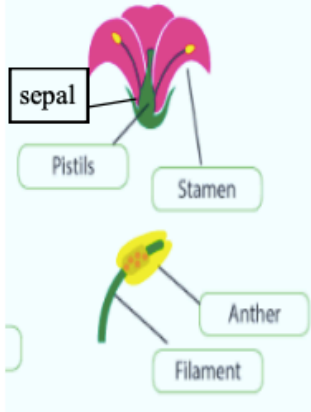
Vocabulary



Knowledge

Vascular Plants

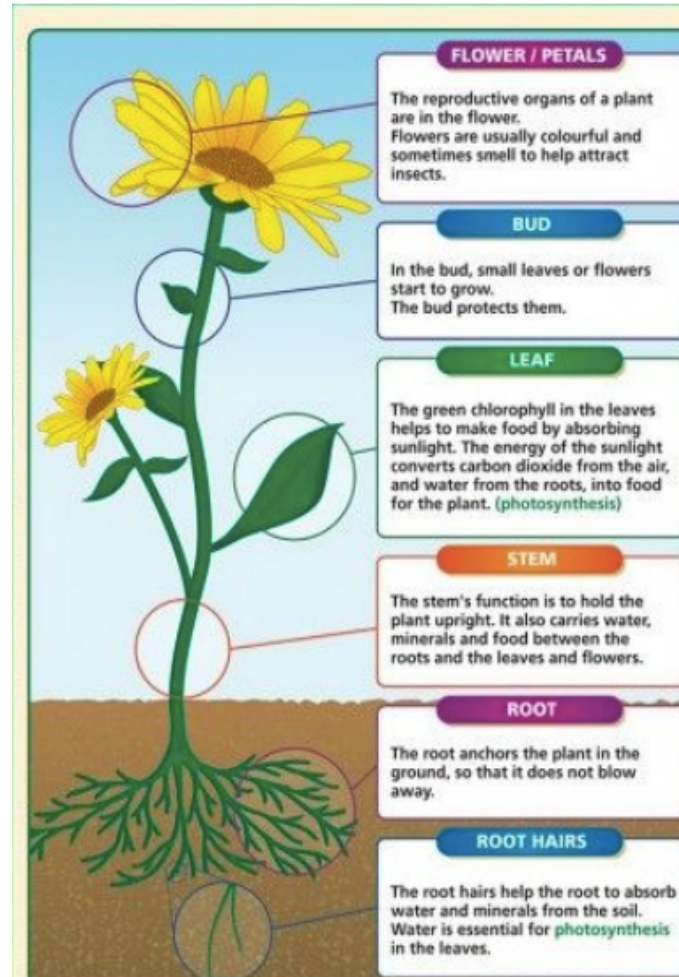
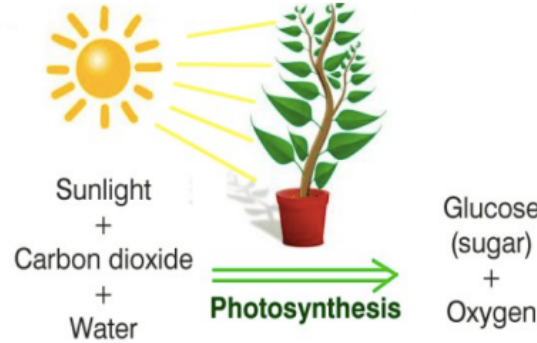
Plants with xylem and phloem tissue to transport food and water.



Non-vascular Plants

Smaller than vascular plants as they have no tubes to carry food and water.

Usually found in moist/damp places.



Classify - group living organisms together with the same characteristics.

Vascular plants - plants which have special 'tubes' inside to transport food and water around the plant.

Non-vascular plants - plants which don't have special 'tubes' to transport food and water around the plant.

Xylem - the 'tubes' that carry water around the plant.

Phloem - the 'tubes' that carry food/sugars around the plant.

Sepal - green, leaf like part of the flower that protects it when it is a developing bud.

Stamen - male part of a flower consisting of a pollen, containing anther and a filament.

Pistil - female part of a flower.

Photosynthesis - process by which plants make their own food.